

RESOLUTION NO. 03-72

**RESOLUTION CREATING RURAL SPECIAL IMPROVEMENT MAINTENANCE
DISTRICT TO BE KNOWN AS R.S.I.D. #702M
COYOTE SUBDIVISION**

WHEREAS, the Board of County Commissioners of Yellowstone County, Montana, met in regular session and executed a Resolution of Intent to Create a Rural Special Improvement Maintenance District #702M for Coyote Subdivision, as described in Exhibit A and more particularly shown in Exhibit B (map) and,

WHEREAS, the Clerk and Recorder published the Notice of the passage of Resolution of Intent to Create the District in the Billings Gazette on June 13th and June 20th, 2003, and mailed a copy of the Notice to every person, firm or corporation owning property in the District; and,

WHEREAS, the Board of County Commissioners finds, determines and declares that:

1. The public interest or convenience requires the creation of a Rural Special Improvement Maintenance District as hereinafter described;
2. The costs of providing maintenance shall be borne by owners of the property included within the boundaries of the Rural Special Improvement Maintenance District with all existing and future lots being assessed an equal amount on a per lot basis;
3. The purpose of forming the District is to provide the maintenance, preservation, and repair of the streets located within the boundaries of this District;
4. The Commissioners have been presented with a valid Petition to create the proposed District;

NOW, THEREFORE, BE IT RESOLVED by the Board of County Commissioners of Yellowstone County as follows:

1. The Commissioners have acquired jurisdiction to create a Rural Special Maintenance District No. 702M to provide for the annual maintenance, preservation and repair of the roadway system. The costs are more particularly described in Exhibit C. The estimated costs shown do not preclude other eligible street maintenance expenditures.
2. All of the costs of the District shall be assessed equally on a per lot basis for all existing and future lots. (See Exhibit D.) The boundaries of this District are shown on the map attached as Exhibit B and described in Exhibit A.
3. The number of the Rural Special Maintenance District thereof shall be No. 702M.

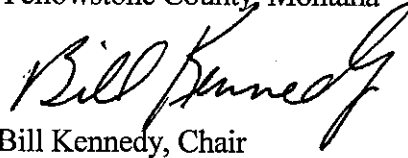
4. All lots accessing their property from the streets will benefit from proposed R.S.I.D. and shall be assessed for road maintenance. All lots will be assessed an equal amount based upon the total cost of the maintenance.

5. The Commissioners desire that an Ad Hoc Committee be appointed to make recommendations to the Commissioners with regard to the need for assessments to be made for the maintenance and the amount of the assessments, and how the assessments should be spent. The Commissioners ask that the Petitioners submit a list of some individuals who are willing to serve on the Ad Hoc Committee. (See Exhibit E.)

PASSED AND ADOPTED by the Board of County Commissioners of Yellowstone County, Montana, this 24th day of June, 2003.

Board of County Commissioners
Yellowstone County, Montana

(SEAL)

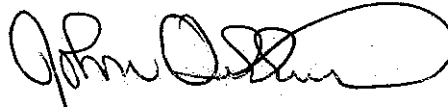


Bill Kennedy, Chair

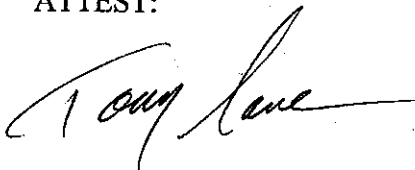


Jim Reno, Sr., Member

ATTEST:



John Ostlund, Member



Tony Nave
Clerk and Recorder

PETITION TO ESTABLISH A RURAL SPECIAL IMPROVEMENT DISTRICT (RSID)

SECTION B
LEGAL DESCRIPTIONS

PROPERTY LEGAL DESCRIPTIONS

Lots 1 through 4 of Coyote Subdivision

RESOLUTION OF INTENT TO CREATE RSUD / 02M-CO-0116

EXHIBIT B: MAP

SECTION 27 OF INTERSTATE 90

SOUTH FRONTAGE ROAD

ROAD

ROAD

ROAD

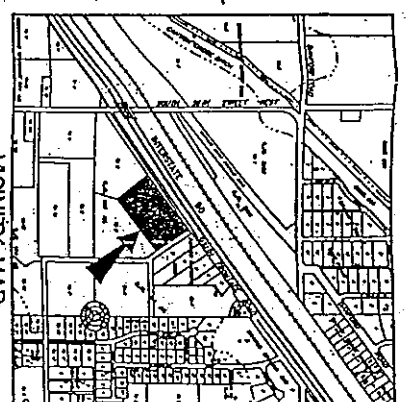
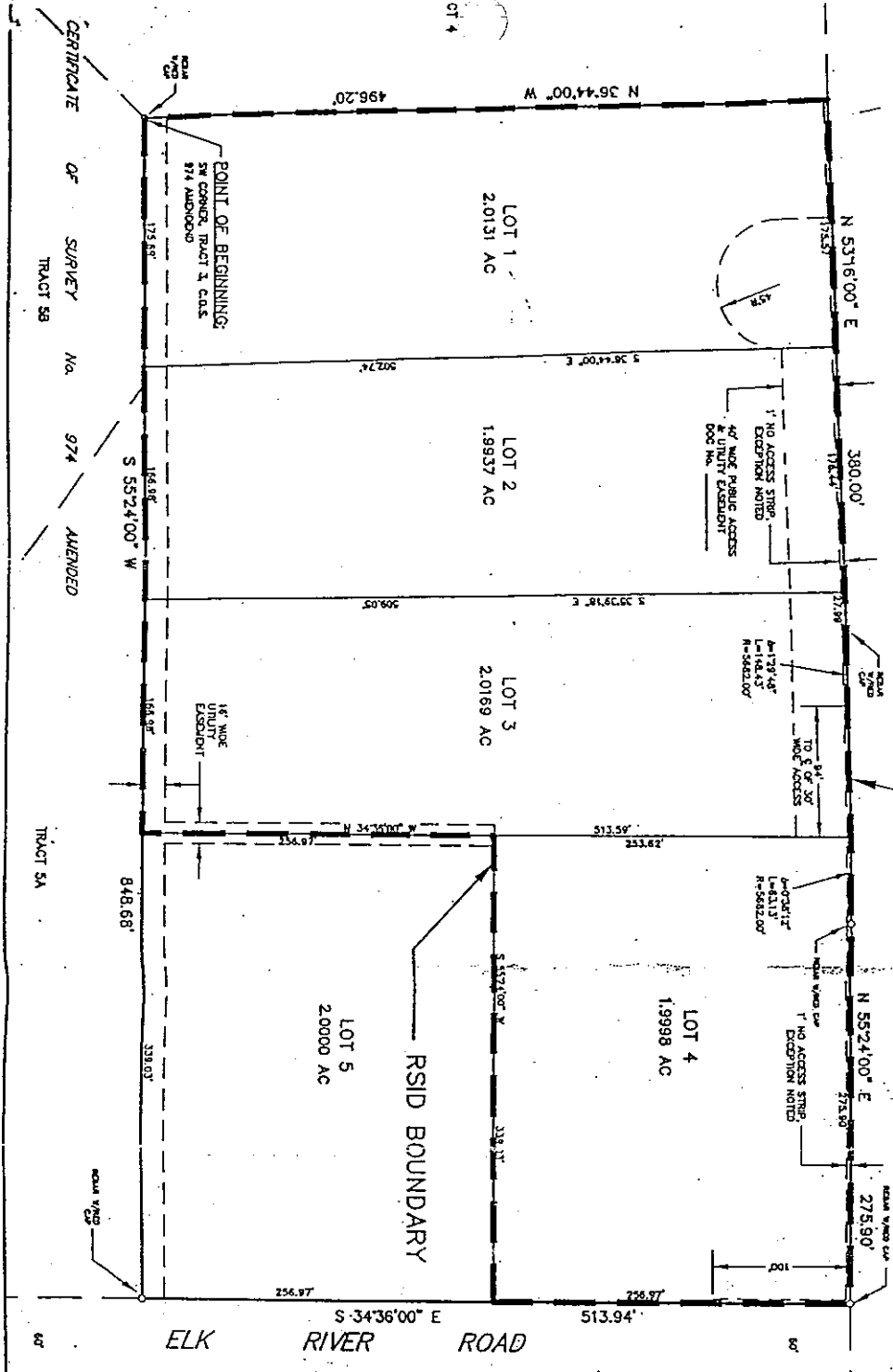
ROAD

ROAD

ROAD

ROAD

ROAD



ELK RIVER ROAD

EDWARD RAY

BLOCK 1

SUBDIVISION

MARCH 2003
YELLOWSTONE, COUNTY

90 15 0 50 100

PETITION TO ESTABLISH A RURAL SPECIAL IMPROVEMENT DISTRICT (RSID)

SECTION D
 METHOD OF ASSESSMENT

CHOOSE A METHOD OF ASSESSMENT:

- Square Footage: _____
- Equal Amount: Distributed equally between four lots in the District.
- Front Footage: _____
- Other (Describe): _____

PETITION TO ESTABLISH A RURAL SPECIAL IMPROVEMENT DISTRICT (RSID)

SECTION C
ESTIMATED ANNUAL MAINTENANCE COST

FALL MAINTENANCE:

ACTIVITY	ESTIMATED COST
Grading and Blading	\$ 100.00
Snow Plowing/Ice Control	\$ 50.00

WINTER MAINTENANCE:

ACTIVITY	ESTIMATED COST
Grading and Blading	\$ 100.00
Snow Plowing/Ice Control	\$ 100.00

SPRING MAINTENANCE:

ACTIVITY	ESTIMATED COST
Grading and Blading	\$ 100.00
Snow Plowing/Ice Control	\$ 50.00

SUMMER MAINTENANCE:

ACTIVITY	ESTIMATED COST
Grading and Blading	\$ 100.00
Weed Control	\$ 150.00 /

TOTAL ESTIMATED ANNUAL MAINTENANCE COST: \$ 750.00